

ZOO DE BEAUVAL TROPICAL GREENHOUSE

ZOO DE BEAUVAL TROPICAL GREENHOUSE

Location

Saint-Aignan-Sur-Cher, France

Client

SAS ZooParc de Beauval

Contractor

Constructions Metalliques Florentaises (C.M.F.)

Scope of work

Design, fabrication and installation of steel structures

Period of execution

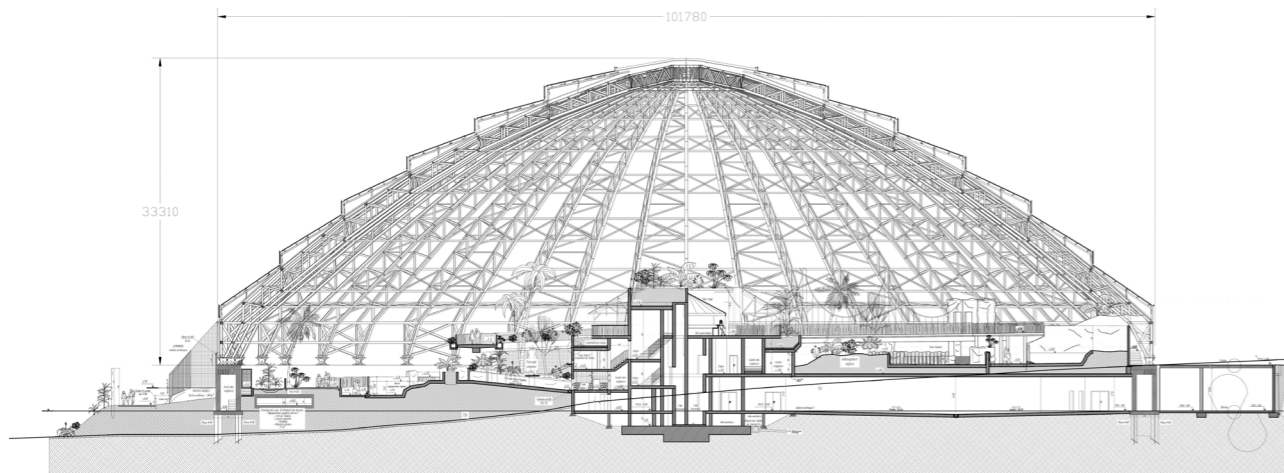
2018

Weight

780 tons

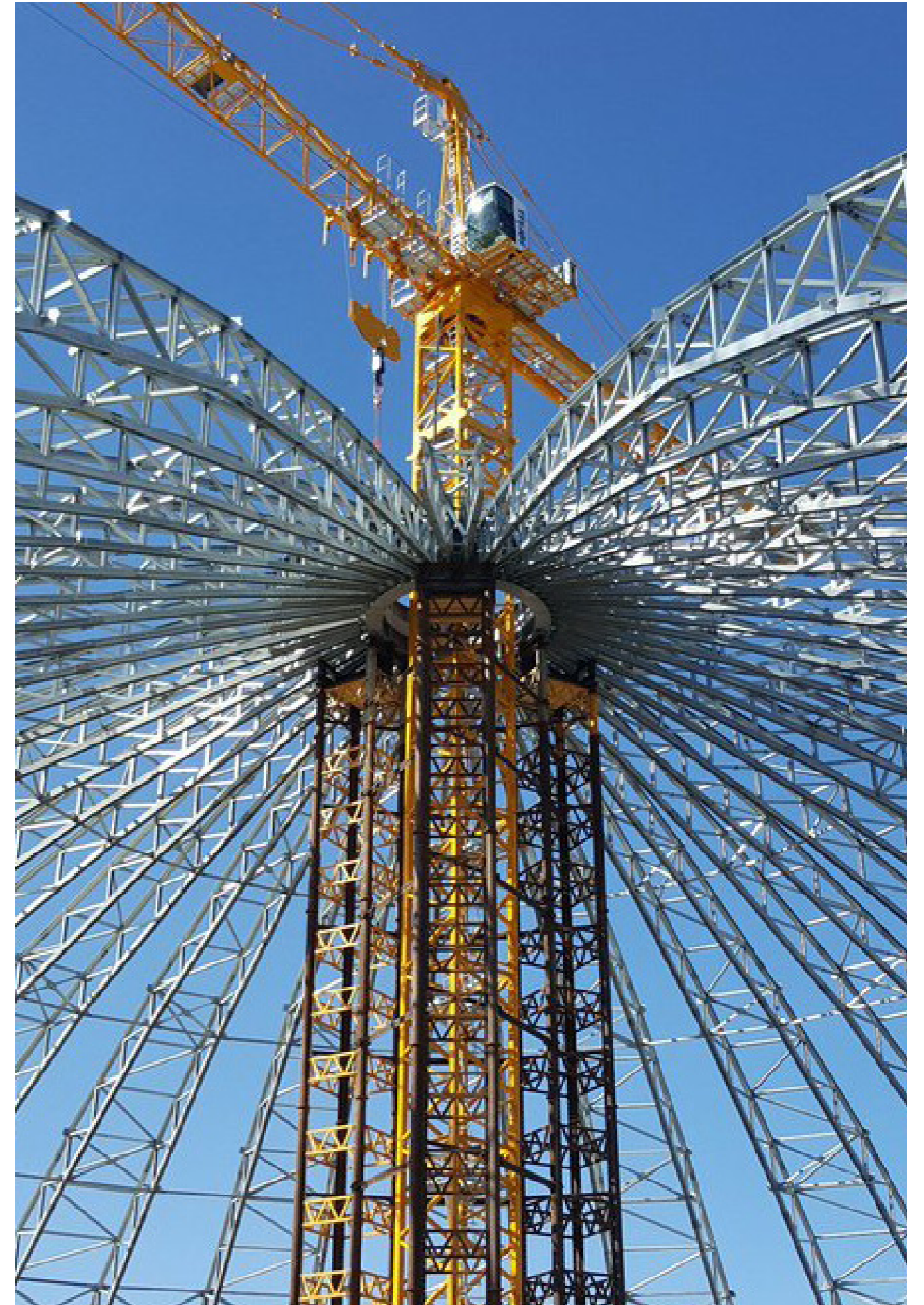
The zoo of Beauval is building, for the fortieth anniversary of its opening that will take place in 2020, a one of a kind tropical dome: bigger than a soccer field, it recreates and controls the temperature and the air management of an equatorial microclimate necessary to host several species of plant and animals.

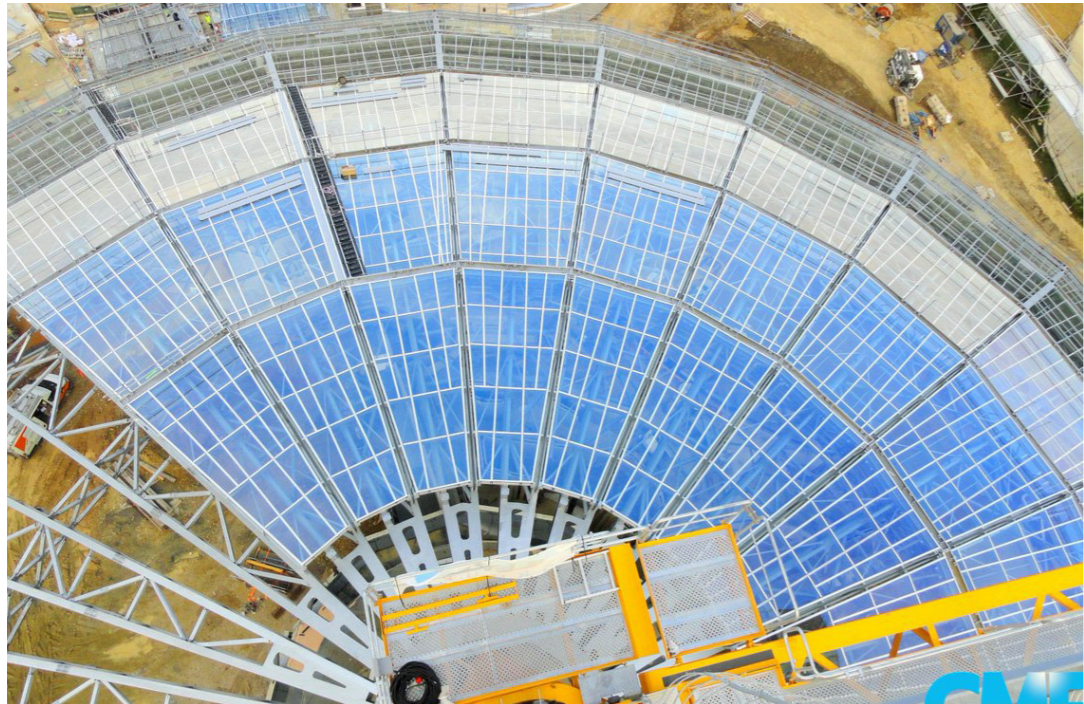
This steel structure has a circular plant with no internal supports and it is the only one of its type in the world: it has a height of 33 meters and a diameter measuring 101 meters, covering an overall surface of 8.000 square meters. The structural steel reaches a final weight of 780 tons and it is divided in 38 semi-arches that have been assembled on the ground and erected with a tower crane located in the middle of the dome lying on a central temporary tower until the completion of the



welding. Later, the dome will be coated with a specific glass needed to regulate the sunlight, the temperature and the air quality to maintain constant the ecosystem required for the flourishing of tropical plant and animals. This new attraction will host up to 3.000 people daily.









Ideas
shape
the
World

Maeg Costruzioni S.p.A.
Via Toniolo 40
31028, Vazzola (TV) - Italy
+39 0438 441558
www.maegspa.com